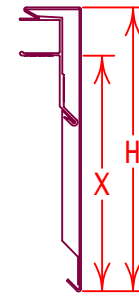
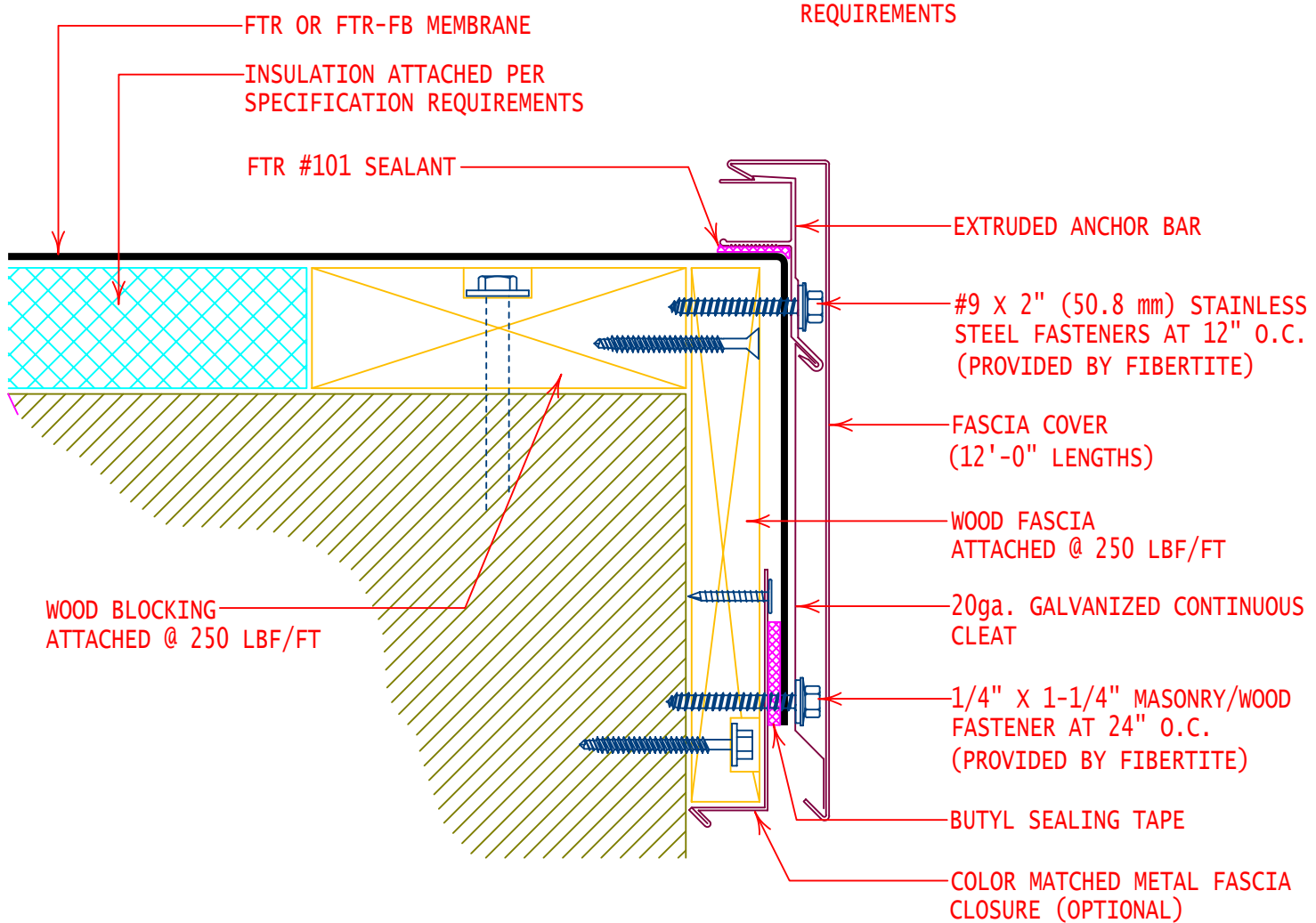


| FIBERTITE AT FASCIA SYSTEM (LARGE FASCIA) |                    |                     |
|---|--------------------|---------------------|
| Product ID. NO.                           | H Dimension        | X Dimension         |
| EFF-2085                                  | 8-1/2" (215.9 mm)  | 7-1/4" (184.2 mm)   |
| EFF-2100                                  | 10" (251.0 mm)     | 8-3/4" (222.25 mm)  |
| EFF-2115                                  | 11-1/2" (292.1 mm) | 10-1/4" (260.35 mm) |
| EFF-2130                                  | 13" (215.9 mm)     | 11-3/4" (298.45 mm) |
| FM Approved 1-270 / Miami Dade Approved   |                    |                     |



NOTE:  
 INSTALL PRE-MANUFACTURED EDGE SYSTEM PER SPECIFICATIONS AND FIBERTITE'S INSTALLATION REQUIREMENTS



GENERAL REFERENCE:  
**"FTR GS06"**  
 APPLICABLE SYSTEMS:  
**"FTR MA06"**  
**"FTR AD06"**

| FIBERTITE AT FASCIA SYSTEM (LARGE FASCIA EDGE) |            |                |
|--|------------|----------------|
| REVISES DETAIL                                 | ISSUE DATE | DRAWING NUMBER |
| ALL PREVIOUS                                   | 03-01-07   | FTR-DE4a       |