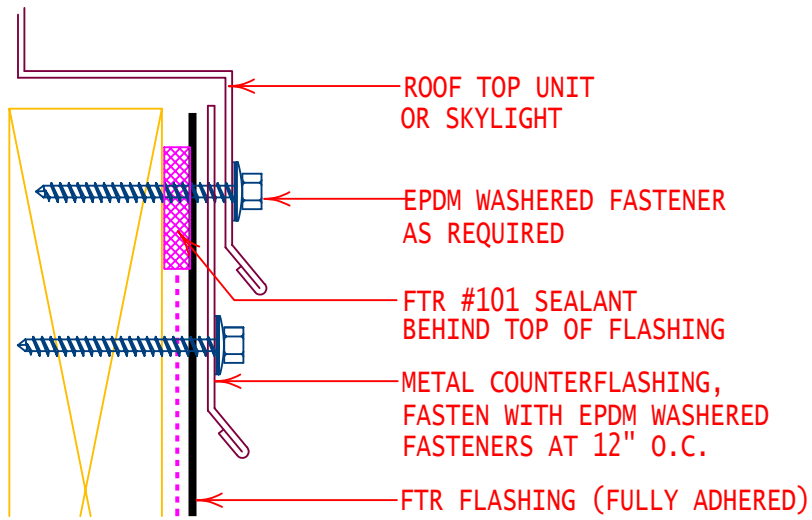
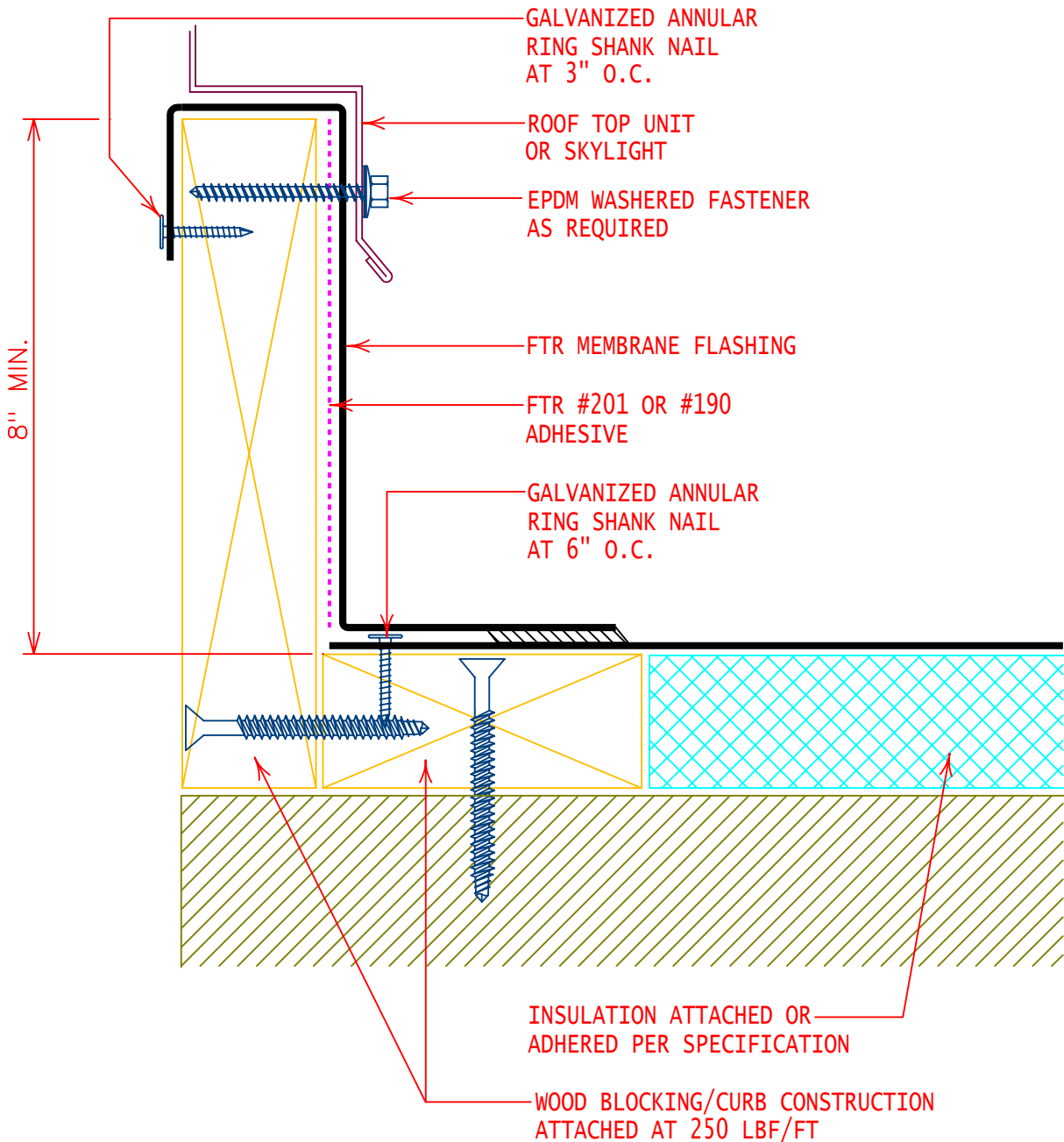


NON-LIFTABLE



- ROOF TOP UNIT OR SKYLIGHT
- EPDM WASHERED FASTENER AS REQUIRED
- FTR #101 SEALANT BEHIND TOP OF FLASHING
- METAL COUNTERFLASHING, FASTEN WITH EPDM WASHERED FASTENERS AT 12" O.C.
- FTR FLASHING (FULLY ADHERED)



- GALVANIZED ANNULAR RING SHANK NAIL AT 3" O.C.
- ROOF TOP UNIT OR SKYLIGHT
- EPDM WASHERED FASTENER AS REQUIRED
- FTR MEMBRANE FLASHING
- FTR #201 OR #190 ADHESIVE
- GALVANIZED ANNULAR RING SHANK NAIL AT 6" O.C.
- INSULATION ATTACHED OR ADHERED PER SPECIFICATION
- WOOD BLOCKING/CURB CONSTRUCTION ATTACHED AT 250 LBF/FT



**INTELLIGENT**  
ROOFING SOLUTIONS

GENERAL REFERENCE:

"FTR GS06"

APPLICABLE SYSTEMS:

"FTR MA06"

"FTR AD06"

"FTR BA06"

TYPICAL WOOD CURB  
OR SKYLIGHT FLASHING

REVISES DETAIL	ISSUE DATE	DRAWING NUMBER
ALL PREVIOUS	03-01-07	FTR-DP1