

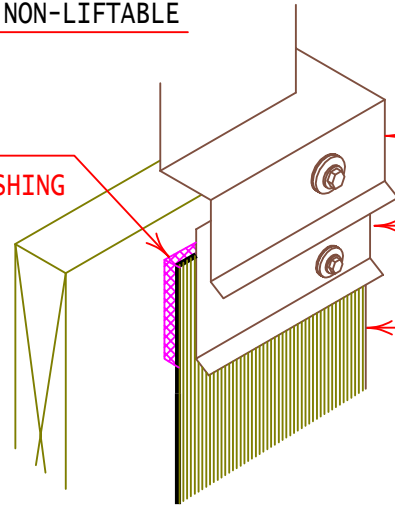
NON-LIFTABLE

FTR #101 SEALANT  
BEHIND TOP OF FLASHING

MECHANICAL UNIT

METAL COUNTERFLASHING, FASTEN W/  
EPDM WASHERED FASTENERS AT 12" O.C.

FTR FLASHING (FULLY ADHERED)



8" MIN.

GALVANIZED ANNULAR  
RING SHANK NAIL  
AT 3" O.C.

ROOF TOP UNIT  
OR SKYLIGHT

EPDM WASHERED FASTENER  
AS REQUIRED

FTR MEMBRANE FLASHING  
ADHERED IN FTR #201  
OR #190 ADHESIVE

PREMOLDED CORNER

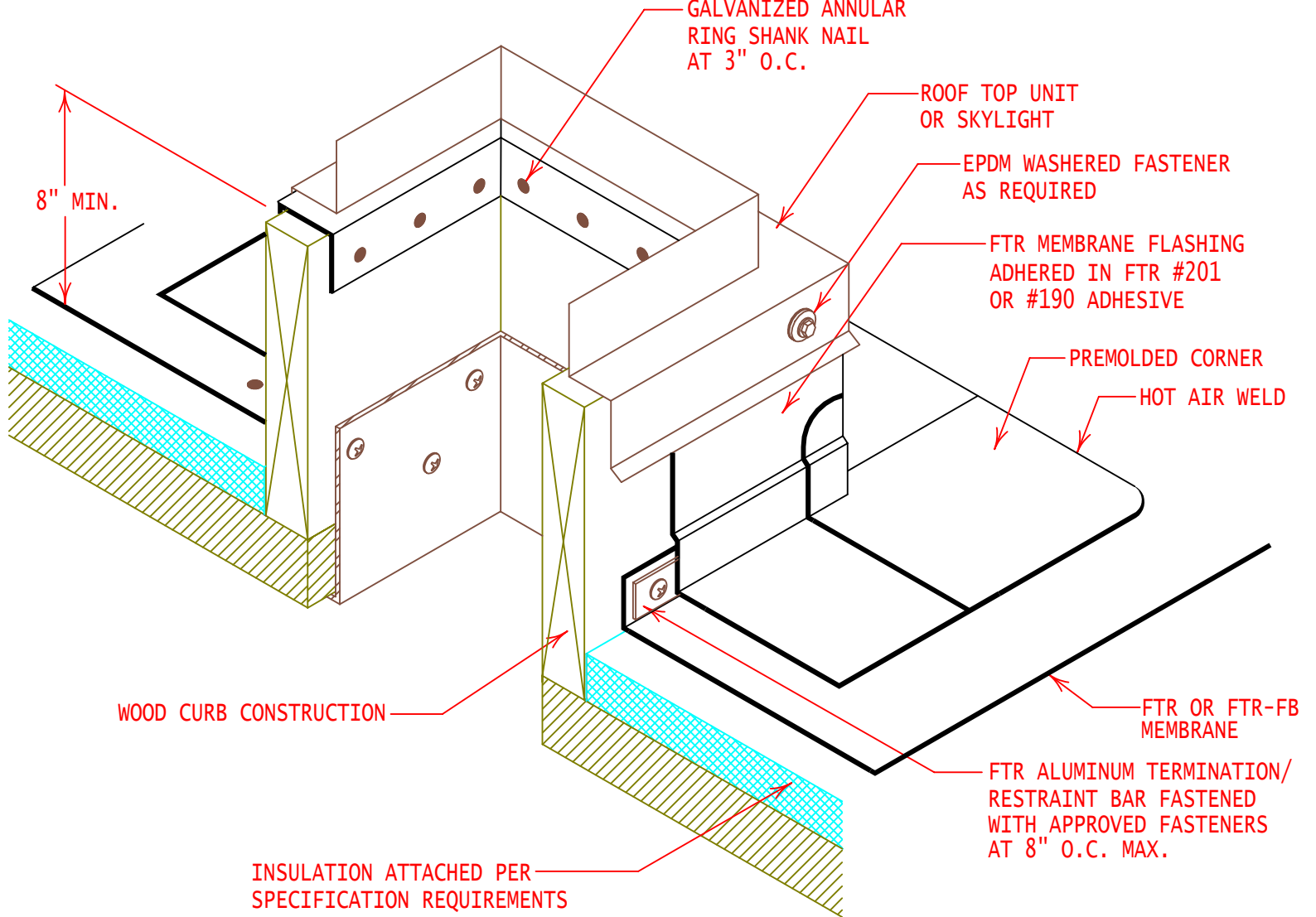
HOT AIR WELD

WOOD CURB CONSTRUCTION

FTR OR FTR-FB  
MEMBRANE

INSULATION ATTACHED PER  
SPECIFICATION REQUIREMENTS

FTR ALUMINUM TERMINATION/  
RESTRAINT BAR FASTENED  
WITH APPROVED FASTENERS  
AT 8" O.C. MAX.



**INTELLIGENT**  
ROOFING SOLUTIONS

GENERAL REFERENCE:

"FTR GS06"

APPLICABLE SYSTEMS:

"FTR AD06"

TYPICAL WOOD OR SKYLIGHT CURB FLASHING  
(BLOCKING ALTERNATE) T-BAR RESTRAINT

REVISES DETAIL

ISSUE DATE

DRAWING NUMBER

ALL PREVIOUS

03-01-07

FTR-DP1ai