

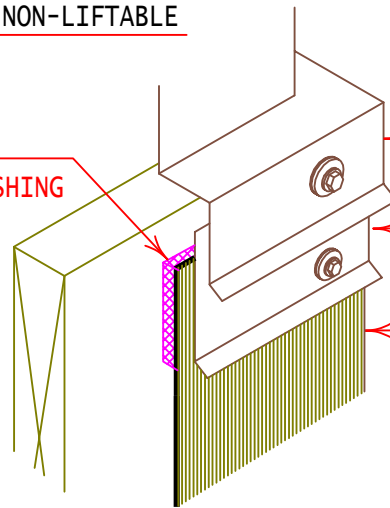
NON-LIFTABLE

FTR #101 SEALANT
BEHIND TOP OF FLASHING

MECHANICAL UNIT

METAL COUNTERFLASHING, FASTEN W/
EPDM WASHERED FASTENERS AT 12" O.C.

FTR FLASHING (FULLY ADHERED)



GALVANIZED ANNULAR
RING SHANK NAIL
AT 3" O.C.

ROOF TOP UNIT
OR SKYLIGHT

8" MIN.

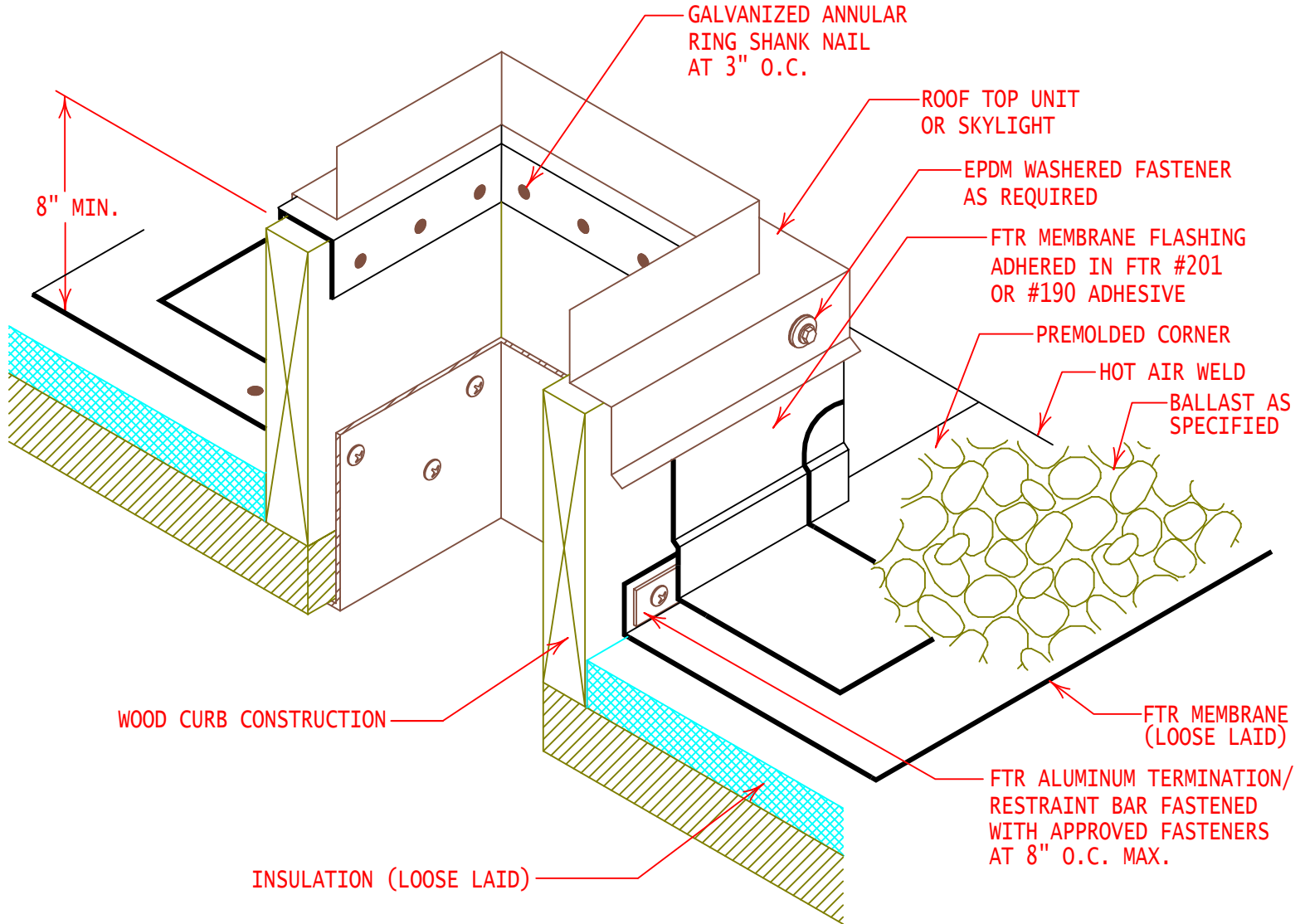
EPDM WASHERED FASTENER
AS REQUIRED

FTR MEMBRANE FLASHING
ADHERED IN FTR #201
OR #190 ADHESIVE

PREMOLDED CORNER

HOT AIR WELD

BALLAST AS
SPECIFIED



WOOD CURB CONSTRUCTION

INSULATION (LOOSE LAID)

FTR MEMBRANE
(LOOSE LAID)

FTR ALUMINUM TERMINATION/
RESTRAINT BAR FASTENED
WITH APPROVED FASTENERS
AT 8" O.C. MAX.



INTELLIGENT
ROOFING SOLUTIONS

GENERAL REFERENCE:

"FTR GS06"

APPLICABLE SYSTEMS:

"FTR BA06"

**WOOD CURB or SKYLIGHT FLASHING
(BLOCKING ALTERNATE) T-BAR RESTRAINT**

REVISES DETAIL

ISSUE DATE

DRAWING NUMBER

ALL PREVIOUS

03-01-07

FTR-DP1bi